



WOODEN PRODUCT BROCHURE 2022



SUPAWOOD / MDF PRODUCTS



**** Mahogany colour refers to dark brown.**

**** Stains may differ from order to order, as products are stained in batches and batch colours differ.**

**** Colours will change throughout the years, and your ordering yearly may have a change in colour with the stains.**



MARULA  BERRY
TRADING

BEV001 – BEVERAGE BOX

A simple and convenient way of displaying beverage condiments.

Available in:

White / Black / Mahogany / Dove Grey / Sand / Charcoal

Branding Available

(Vinyl are charged for separately)

Standard Dimensions

17.5cm x 12.5cm (Length x Width)

Front Height: 3.5cm

Back Height: 7cm



BEV002 – BEVERAGE TRAY

An all in one solution to display your kettle, cups and beverages for your guests.

The trays are provided with a cut out section for a kettle cord.

Available in:

White / Black / Mahogany / Dove Grey / Sand / Charcoal

Standard Dimensions:

38cm x 25.5cm (Length x Width)

Front Height: 3.5cm

Back Height: 8.5cm



BEV003 – SINGLE NEW AGE BEVERAGE BOX

A compact way of keeping your beverages neatly displayed.

Great for serviced apartments or self-catering units

Available in:

White / Black / Mahogany / Dove Grey / Sand / Charcoal

Standard Dimensions

10cm x 8.5cm x 5cm (Length x Width x Height)



BEV004 – DOUBLE NEW AGE BEVERAGE BOX

This 'Double' new age beverage box offers convenient compartments to display your variety of beverages and treats for your guests.

Available in:

White / Black / Mahogany / Dove Grey / Sand / Charcoal

Standard Dimensions

20cm x 8.5cm x 5cm (Length x Width x Height)



BEV005 – TRIPLE NEW AGE BEVERAGE BOX

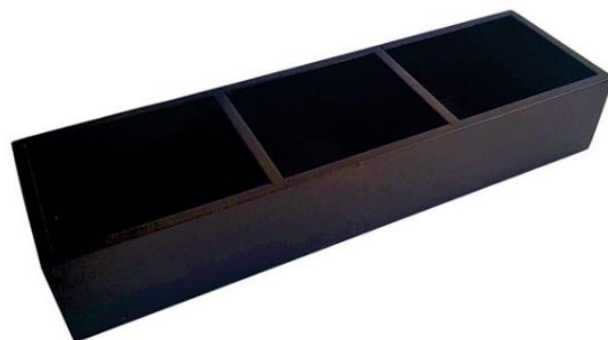
Uniquely designed with three divided compartments to offer a variety of beverages and other treats for your guests

Available in:

White / Black / Mahogany / Dove Grey / Sand / Charcoal

Standard Dimensions

30cm x 8.5cm x 5cm (Length x Width x Height)



BEV006 – TEA STATION

A sophisticated, yet functional design of beverage compartment with a pull-out draw.

The top has space to hold a mini kettle and mugs

Available in:

White / Black / Mahogany / Dove Grey / Sand / Charcoal

Standard Dimensions

30cm x 23.5cm x 10.5cm (Length x Width x Height)



BEV007 – TEA BOX WITH

6 COMPARTMENTS

Uniquely designed to display a variety of packaged flavoured teas.

Each compartment size: 7cm x 7cm

Holds standard 5 Roses Tea Range and Twining's Tea Range. (Does not cater for the new 5 Roses Infusion Teabag range)

Available in:

White / Black / Mahogany / Dove Grey / Sand / Charcoal

Branding Available

(Vinyl are charged for separately)

Standard Dimensions

22cm x 15cm x 7cm (Length x Width x Height with lid closed)



BEV008 – TEA BOX WITH

12 COMPARTMENTS

A sophisticated design to display a variety of packaged flavoured teas.

Each compartment size: 7cm x 7cm

Holds standard 5 Roses Tea Range and Twining's Tea Range. (Does not cater for the new 5 Roses Infusion Teabag range)

Available in:

White / Black / Mahogany / Dove Grey / Sand / Charcoal

Branding Available

(Vinyl are charged for separately)

Standard Dimensions

30cm x 21.5cm x 9cm (Length x Width x Height with lid closed)



BEV009 – LARGE CONFERENCE BOX WITH LID

Exclusively designed with compartments to offer a variety of beverages and other treats for your guests

Holds standard 5 Roses Tea Range and Twinning's Tea Range. (Does not cater for the new 5 Roses Infusion Teabag range)

Available in:

White / Black / Mahogany / Dove Grey / Sand / Charcoal

Standard Dimensions

46.5cm x 24cm x 10cm (Length x Width x Height with lid closed)



BEV010 – LARGE CONFERENCE BOX WITHOUT LID

A simple, yet elegant design to display your packaged beverages and treats for your guests

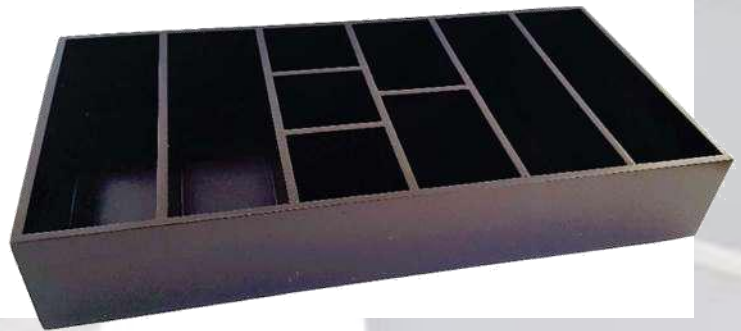
Holds standard 5 Roses Tea Range and Twinning's Tea Range. (Does not cater for the new 5 Roses Infusion Teabag range)

Available in:

White / Black / Mahogany / Dove Grey / Sand / Charcoal

Standard Dimensions

46.5cm x 24cm x 10cm (Length x Width x Height)



BEV011 – SMALL CONFERENCE BOX WITH LID

A compact design with compartments to offer a variety of beverages and other treats for your guests.

Holds standard 5 Roses Tea Range and Twinning's Tea Range. (Does not cater for the new 5 Roses Infusion Teabag range)

Available in:

White / Black / Mahogany / Dove Grey / Sand / Charcoal

Standard Dimensions

38cm x 20cm x 7cm (Length x Width x Height with lid closed)



TB001 – TEA BOX, SQUARE

A simple, yet elegant design to display your packaged flavoured beverages.

Each compartment: 10cm x 7cm

Available in:

White / Black / Mahogany / Dove Grey / Sand / Charcoal

Standard Dimensions

21.5cm x 16.5cm x 7cm (Length x Width x Height)

CAN ALSO BE MADE WITH A GLASS LID



TB002 – TEA BOX LONG WITH 4 COMPARTMENTS

Exclusively designed with compartments to offer a variety of flavoured beverages.

Each compartment: 10cm x 7cm

Available in:

White / Black / Mahogany / Dove Grey / Sand / Charcoal

Standard Dimensions

43.5cm x 9cm x 7cm (Length x Width x Height)



WTEA001 – WOODEN TEA BOX WITH GLASS LID

An elegant, 7 compartment tea box design, styled with a glass lid.

Available in:

White / Black / Mahogany / Dove Grey / Sand / Charcoal

Standard Dimensions

22cm x 16.5cm x 9cm (lid closed)



CAD001 – CADDY 1 [LONG]

Exclusively designed with compartments to offer a variety of beverages and other treats for your guests.

Available in:

White / Black / Mahogany / Dove Grey / Sand / Charcoal

Standard Dimensions

21cm x 6cm x 4cm (Length x Width x Height)



CAD002 – CADDY 2 [SMALL]

A simply yet elegant design to display your packaged beverages for your guests.

Available in:

White / Black / Mahogany / Dove Grey / Sand / Charcoal

Standard Dimensions

14.5cm x 10.5cm (Length x Width)

Front Height: 4.5cm

Back Height: 6.5cm



DDB001 – DELUX DISPLAY BOX

Uniquely designed with compartments to offer a variety of beverages for your guests

Available in:

White / Black / Mahogany / Dove Grey / Sand / Charcoal

Standard Dimensions

24cm x 23cm x 4cm (Length x Width)

Front Height: 16cm

Back Height: 6cm



WAS001 – WASTE BIN FUNNEL WITHOUT LID

Designed with simplicity and elegance in mind!

Lid sold separately

Available in:

White / Black / Mahogany / Dove Grey / Sand / Charcoal

Standard Dimensions

Total Height: 26cm

Top Width: 23cm

Bottom Width: 18cm



LID001 – WASTE BIN LID

Lid Sold Separately (Optional purchase)
23cm x 23cm



DS001 – DESK SIGN

Included Row Mark plaque

Custom wording to your specific requirements.

Available in:

White / Black / Mahogany / Dove Grey / Sand / Charcoal

Standard Dimensions

30cm x 10cm x 10cm (Length x Width x Height)



REM001 – REMOTE HOLDER 3 DIVISIONS

Uniquely designed with simplicity and style.

Available in:

White / Black / Mahogany / Dove Grey / Sand / Charcoal

Standard Dimensions

15cm x 8.5cm (Length x Width)

Front Height: 7cm

Back Height: 14.5cm



REM002 – REMOTE/ MAGAZINE HOLDER

Designed with simplicity and elegance in mind!

Available in:

White / Black / Mahogany / Dove Grey / Sand / Charcoal

Standard Dimensions

18cm x 20cm (Length x Width)

Front Height: 7.5cm

Back Height: 22cm



PAM001 – PAMPHLET STAND

Designed with simplicity and elegance in mind!

Holds DL size as well as business cards

Available in:

White / Black / Mahogany / Dove Grey / Sand / Charcoal

Standard Dimensions

11.5cm x 9.5cm x 17.5cm (Length x Width x Height)



BRO001– BROCHURE STAND

An executive design to display your brochures.

Holds a standard A4 size book / guest folder

Available in:

White / Black / Mahogany / Dove Grey / Sand / Charcoal

Standard Dimensions

26.5cm x 9.5cm (Length x Width)

Front Height: 5cm

Back Height: 17cm



DND001 – DO NOT DISTURB SIGN

A double sided with branding: “Do not disturb” and “please make up room”.

Vinyl artwork included Engraving also available

Available in:

White / Black / Mahogany / Dove Grey / Sand / Charcoal

Standard Dimensions

24cm x 8cm (Length x Width)



TRA001 – 30CM TRAY [SMALL]

A compact tray designed with simplicity.

Branding/ Vinyl charged for separately

Available in:

White / Black / Mahogany / Dove Grey / Sand / Charcoal

Standard Dimensions

30cm x 25cm (Length x Width)

Lip Height: 3cm

Handle Height: 5cm



TRA002 – 45CM TRAY [MEDIUM]

This stylish medium tray provides generous space to serve a variety of beverages and treats to your guests.

Branding/ Vinyl charged for separately

Available in:

White / Black / Mahogany / Dove Grey / Sand / Charcoal

Standard Dimensions

45cm x 34cm (Length x Width)

Lip Height: 3cm

Handle Height: 6.5cm



TRA003 – 60CM TRAY [LARGE]

The complete tray solution, where sophistication meets functionality.

Branding/ Vinyl charged for separately

Available in:

White / Black / Mahogany / Dove Grey / Sand / Charcoal

Standard Dimensions

60cm x 45cm (Length x Width)

Lip Height: 3cm

Handle Height: 7cm



TRA004 – TRAY WITH SLANTED SIDES

A unique design, with wrist comfort and stability in mind!

Branding/ Vinyl charged for separately

Available in:

White / Black / Mahogany / Dove Grey / Sand / Charcoal

Standard Dimensions

45cm x 45cm x 4.5cm (Length x Width x Height)



TRA005 – TRAY WITH FLAT SIDES

This tray has an executive design, with square edges and flat sides.

Branding/ Vinyl charged for separately

Available in:

White / Black / Mahogany / Dove Grey / Sand / Charcoal

Standard Dimensions

30cm x 30cm x 4.5cm (Length x Width x Height)



TRA010 – TRAY WITH CHROME HANDLES

An exclusive design with convenient compartments.

Branding/ Vinyl charged for separately

Available in:

White / Black / Mahogany / Dove Grey / Sand / Charcoal

Standard Dimensions

45cm x 34cm x 8cm (Length x Width x Height)



BUT001 – BUTLERS TRAY **WITHOUT STAND**

This tray has an executive design, with square edges and flat sides.

Available in:

White / Black / Mahogany / Dove Grey / Sand / Charcoal

Standard Dimensions

60cm x 45cm x 8cm (Length x Width x Height)

Handle Height: 11cm

Corner Height: 11cm



BUT002– BUTLERS TRAY WITH STAND

The complete butlers tray solution, designed with elegance.

Available in:

White / Black / Mahogany / Dove Grey / Sand / Charcoal

Standard Dimensions

Tray Dimensions: 60cm x 45cm x 6cm

Leg Dimensions: 56cm x 41cm x 71cm



BLEG001 – BUTLERS LEGS ONLY

The traditional, yet elegant design of butlers legs to stabilise a tray at a convenient height.

Available in:

White / Black / Mahogany / Dove Grey / Sand / Charcoal

Standard Dimensions

Leg Dimensions: 56cm x 41cm x 71cm (approximate)



NOS001 – NO SMOKING SIGNS

A double sided, triangular design.

Branding and Vinyl artwork included
Engraving also available

Available in:

White / Black / Mahogany / Dove Grey /
Sand / Charcoal

Standard Dimensions

9cm x 9cm x 9cm (Length x Width x Height)



RES001 – RESERVED TABLE SIGN

A unique wooden display sign to reserve tables for your guests

**Branding and Vinyl artwork included.
Engraving also available**

Various Font Styles Available

Available in:

White / Black / Mahogany / Dove Grey / Sand / Charcoal

Standard Dimensions

12cm x 9cm x 9cm (Length x Width x Height)



TAB001 – TABLE NUMBERS

A triangular table number design, with branding on all 3 sides.

**Branding and Vinyl artwork included.
Engraving also available**

Various Font Styles Available

Available in:

White / Black / Mahogany / Dove Grey / Sand / Charcoal

Standard Dimensions:

9cm x 9cm x 9cm



MEN001 – RECTANGULAR MENU HOLDERS

A rectangular menu holder design, with a middle slot to display your menu or specials of the day.

Available in:

White / Black / Mahogany / Dove Grey / Sand / Charcoal

Standard Dimensions

10cm x 5cm x 5cm (Length x Width x Height)



MEN002 – TRIANGULAR MENU HOLDERS

A triangular menu holder design, with a middle slot to display your menu or specials of the day.

Available in:

White / Black / Mahogany / Dove Grey / Sand / Charcoal

Standard Dimensions

10cm x 4.5cm x 6cm (Length x Width x Height)



TIS001 – TISSUE BOX COVER 100's WITHOUT SLIDING BOTTOM

Available in:

White / Black / Mahogany / Dove Grey / Sand / Charcoal

Standard Dimensions

25cm x 13cm x 7cm (Length x Width x Height)



TIS002 – TISSUE BOX COVER 200's WITHOUT SLIDING BOTTOM

Available in:

White / Black / Mahogany / Dove Grey / Sand / Charcoal

Standard Dimensions

25cm x 13cm x 10.5cm (Length x Width x Height)



TIS003 – TISSUE BOX COVER SQUARE WITHOUT SLIDING BOTTOM

Available in:

White / Black / Mahogany / Dove Grey / Sand / Charcoal

Standard Dimensions

12.5cm x 12.5cm x 13cm (Length x Width x Height)



TIS004 – TISSUE BOX COVER SQUARE WITH SLIDING BOTTOM

Available in:

White / Black / Mahogany / Dove Grey / Sand / Charcoal

Standard Dimensions

12.5cm x 12.5cm x 14cm (Length x Width x Height)



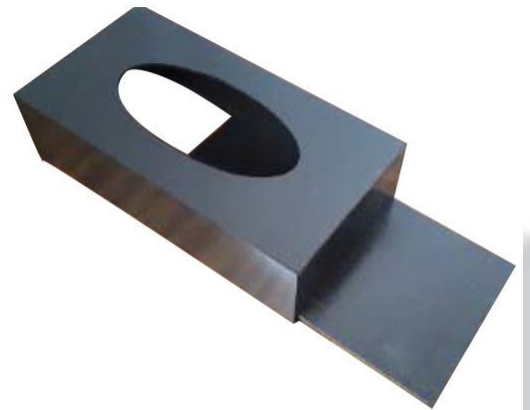
TIS005 – TISSUE BOX COVER 100'S WITH SLIDING BOTTOM

Available in:

White / Black / Mahogany / Dove Grey / Sand / Charcoal

Standard Dimensions

25cm x 13cm x 8cm (Length x Width x Height)



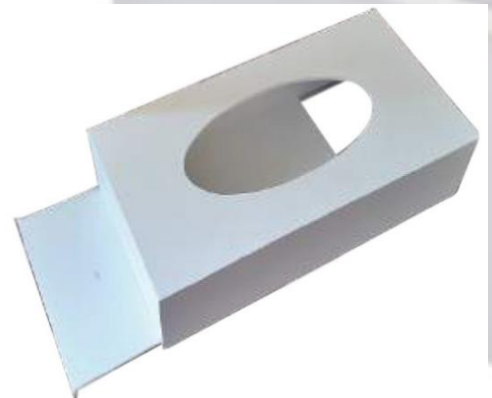
TIS006 – TISSUE BOX COVER 200'S WITH SLIDING BOTTOM

Available in:

White / Black / Mahogany / Dove Grey / Sand / Charcoal

Standard Dimensions

25cm x 13cm x 11.5cm (Length x Width x Height)



BAT001 – BATHROOM AMENITY TRAY

A great way to display your amenities in the bathroom

Available in:

White / Black / Mahogany / Dove Grey / Sand / Charcoal

Standard Dimensions

25cm x 12cm x 2.5cm (Length x Width x Height)



TOI001 – TOILET PAPER HOLDER

A convenient “three” stand holder for toilet paper in the bathroom.

Available in:

White / Black / Mahogany / Dove Grey / Sand / Charcoal

Standard Dimensions

12.5cm x 12.5cm x 30.5cm (Length x Width x Height)



CON001 – CONDIMENT HOLDER 2 COMPARTMENT

Compartment: 7cm x 7cm

Available in:

White / Black / Mahogany / Dove Grey / Sand / Charcoal

Standard Dimensions

16cm x 8cm x 9cm Length x Width x Height)



CON002 – CONDIMENT HOLDER 4 COMPARTMENT

Compartment: 7cm x 7cm

Available in:

White / Black / Mahogany / Dove Grey / Sand / Charcoal

Standard Dimensions

17.5cm x 17.5cm x 9cm (Length x Width x Height)



CON003 – CONDIMENT HOLDER 6 COMPARTMENT

Compartment: 7cm x 7cm

Available in:

White / Black / Mahogany / Dove Grey / Sand / Charcoal

Standard Dimensions

24cm x 17.5cm x 9cm (Length x Width x Height)



CON004 – CONDIMENT HOLDER 8 COMPARTMENT

Compartment: 7cm x 7cm

Available in:

White / Black / Mahogany / Dove Grey / Sand /
Charcoal

Standard Dimensions

30cm x 17.5cm x 9cm (Length x Width x Height)



CLEANING INSTRUCTIONS FOR: SUPAWOOD / MDF PRODUCTS

ALL PRODUCTS CAN BE CUSTOMISED FOR YOUR ESTABLISHMENT'S REQUIREMENTS

Please note that all images are for representation only and do not depict the actual product
There may be slight variances with the stain and accessories on the finished products. (Handles/
knobs, etc.)

All accessories as seen in the pictures are for presentation purposes only and are not included
with the product. (These items can be purchased separately from The Silver Flair)

All changes to designs or colour will result in longer manufacturing lead-times.

****All dimensions are approximate and may differ slightly on the final product**

WOODEN PRODUCTS (MDF / SUPAWOOD)

1.1 The CUSTOMER acknowledges that the colour / paint on wooden products may vary slightly in colour since the wooden products are sprayed in batches. Likewise, there may be differences in handles and knobs if ordered at different times as the same items may no longer be available. The CUSTOMER will therefore not be entitled to delay payment or fail to make payment as a result of a variation in colour.

1.2 There is an approximate lead time of 5-7 business days for all wooden products. This lead time may vary.

1.3 The CUSTOMER acknowledges that the lead time for wooden products is weather dependent.

SAMPLES

2.1 In the event that a CUSTOMER requires a customized designed wooden product a sample will be manufactured at the CUSTOMER'S cost and will need to be signed off before manufacturing of the order commences.

Only use a damp cloth with soapy water.

Do not submerge the product in water.

Ensure that the product is dried thoroughly

**DO NOT use any furniture polish on the products.
(This will damage the item)**

